

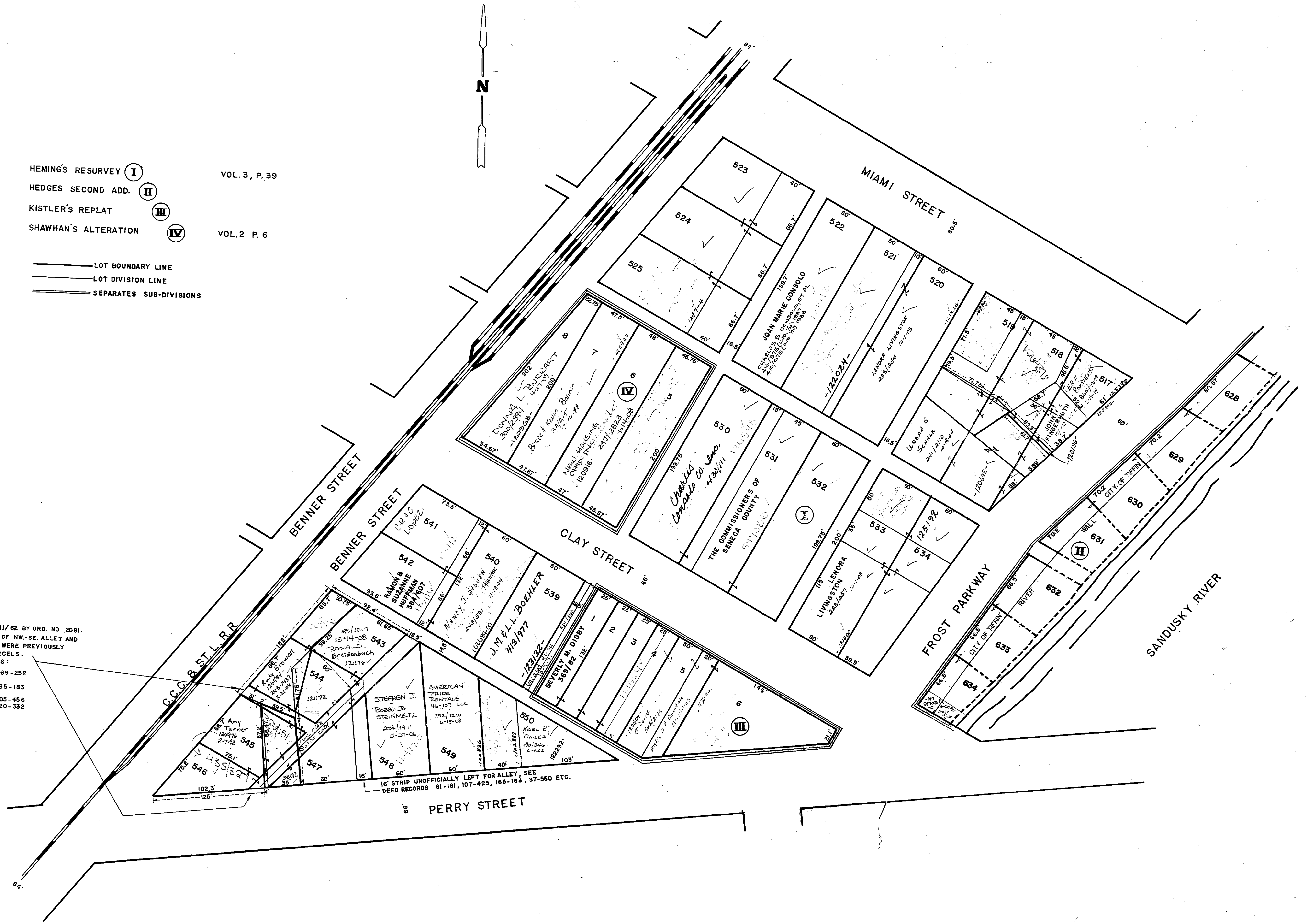
HEMING'S RESURVEY **I** VOL. 3, P. 39
 HEDGES SECOND ADD. **II**
 KISTLER'S REPLAT **III**
 SHAWHAN'S ALTERATION **IV** VOL. 2 P. 6

— LOT BOUNDARY LINE
 — LOT DIVISION LINE
 — SEPARATES SUB-DIVISIONS



12/18/62
 ALLEYS OFFICIALLY VACATED 11/62 BY ORD. NO. 2081.
 DEED RECORDS SHOW THAT ALL OF NW-SE, ALLEY AND
 SOUTH PART OF NE-SW, ALLEY WERE PREVIOUSLY
 CONVEYED WITH ADJACENT PARCELS.
 SEE DEED & C.T.R.E. RECORDS:

37-550	144-532	269-252
61-161	155-86	
107-425	190-205	165-183
209-575	189-533	
205-576	*6-102	205-456
226-285	226-286	
255-417	251-337	*20-332
135-153	255-236	
155-81	261-6	
235-190	261-3	



16' STRIP UNOFFICIALLY LEFT FOR ALLEY, SEE DEED RECORDS 61-161, 107-425, 185-183, 37-550 ETC.